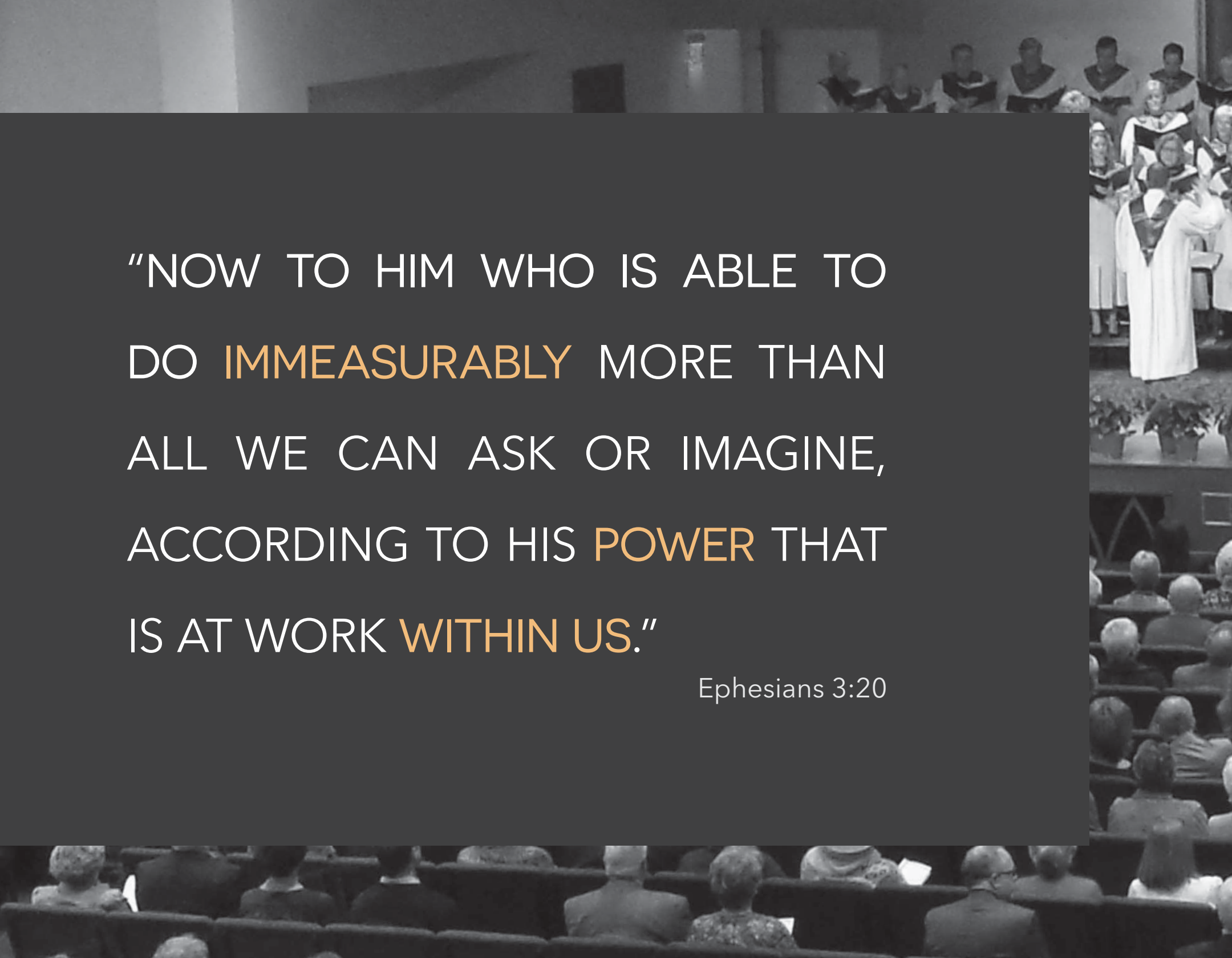




BEYOND US

OUR JOURNEY OF GENEROSITY



"NOW TO HIM WHO IS ABLE TO
DO **IMMEASURABLY** MORE THAN
ALL WE CAN ASK OR IMAGINE,
ACCORDING TO HIS **POWER** THAT
IS AT WORK **WITHIN US.**"

Ephesians 3:20



CONTENT

- [LETTER FROM THE PASTOR](#) ● 04
- [OUR HISTORY](#) ● 06
- [BEYOND NUMBERS](#) ● 09
- [THE GIVING LADDER](#) ● 10
- [Q & A](#) ● 11
- [WHAT'S NEXT](#) ● 12
- [PARTICIPATION CARD](#) ● 15
- [BEYOND KNOWLEDGE](#) ● 19
- [STEPS TO DISCERNMENT](#) ● 20
- [WEEKEND 1: BEYOND ME: COMMUNITY](#) ● 21
- [WEEKEND 2: BEYOND TODAY: TOMORROW](#) ● 25
- [WEEKEND 3: BEYOND GIVING: GENEROSITY](#) ● 29
- [WEEKEND 4: BEYOND SUNDAY: 24/7](#) ● 33
- [WEEKEND 5: BEYOND US: IT'S A GOD THING](#) ● 37

DEAR FRIENDS,

Our mission is to lead people into a full life found in Jesus Christ. We truly believe the Lord has positioned us to carry out this mission and be a redeeming force of hope and healing in our community and beyond.

“For generations, Franklin First United Methodist Church has been a church committed to growth. We see it all throughout our history, from our first church building in 1799, through the 1800’s in the midst of a Civil War, and into the mid-1950’s as we continued to expand our downtown campus. Now we have the opportunity to do what each generation has done before us . . . leverage the potential of the new Franklin First United Methodist Church Main Campus at Mack Hatcher to reach our community in new and powerful ways.”

A Time Such As This

More than 200 years ago a group of men and women heard a call from God to begin a church in their community of Franklin, Tennessee. I’m sure at that point in time they had no idea what the future would hold. All they knew was the Lord had confirmed a calling on their lives and joined them together with a group of people who shared the same passion for reaching people with the hope of Jesus Christ.

Now, as I look back on more than two centuries of history, I am struck by the level of faithfulness the

Lord has shown in each step along the way. Even more, I find myself humbled by the way he has chosen to use us at this moment in time to impact Franklin, Tennessee for the Kingdom of God.

Beyond Us

Up to this point we have launched many successful campaigns focusing on everything from acquiring the land to paying down debt and ultimately building our new state-of-the-art facility at the Main Campus. For those of you who have given generously to past campaigns, thank you. Your generosity has helped pave the way to where we

are today. God has done and is doing great things through Franklin First UMC.

We are still on mission and are always looking ahead to see what God has planned for Franklin First UMC. Together we are launching into this journey of generosity, committed to dreaming big about how our faith in a big God can do things beyond our expectations.



Dr. A. Lynn Hill, Senior Pastor



BEYOND ME

Throughout the Bible there are stories of people who were asked by God to go beyond what they could do alone. People like Job, Paul, Noah, Moses, David, Esther, Jonah, Mary, Joseph, Abraham, Peter, Thomas . . . God always takes the initiative to involve us in His work. And His invitation for us to work with Him always leads to a crisis of belief that requires faith and action. In every case, God presented a challenge

that initially felt unthinkable. But what would have been impossible to accomplish alone was made possible when they put their trust in God.

When we put our faith in God, what seems beyond us is not beyond Him. God has given Franklin First UMC a big mission to reach our community and our world. As a church, we are intentionally moving toward a

way of living that is marked by love and generosity. For more than 200 years we have witnessed breathtaking moments of life transformation in ourselves, our community and around the world. This is your invitation to join us in what's coming next. There is one thing we can promise – our God always delivers more than what we can imagine.

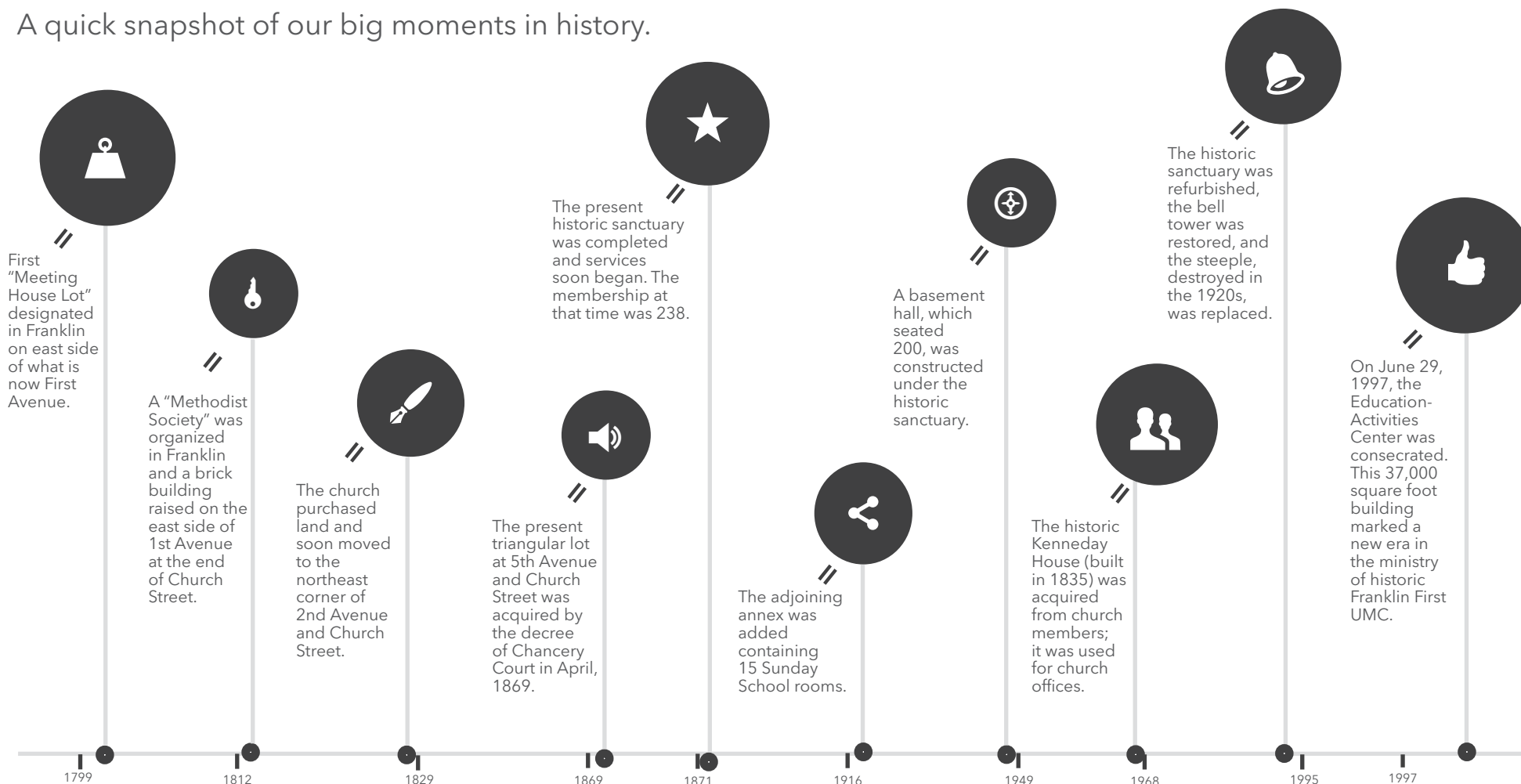


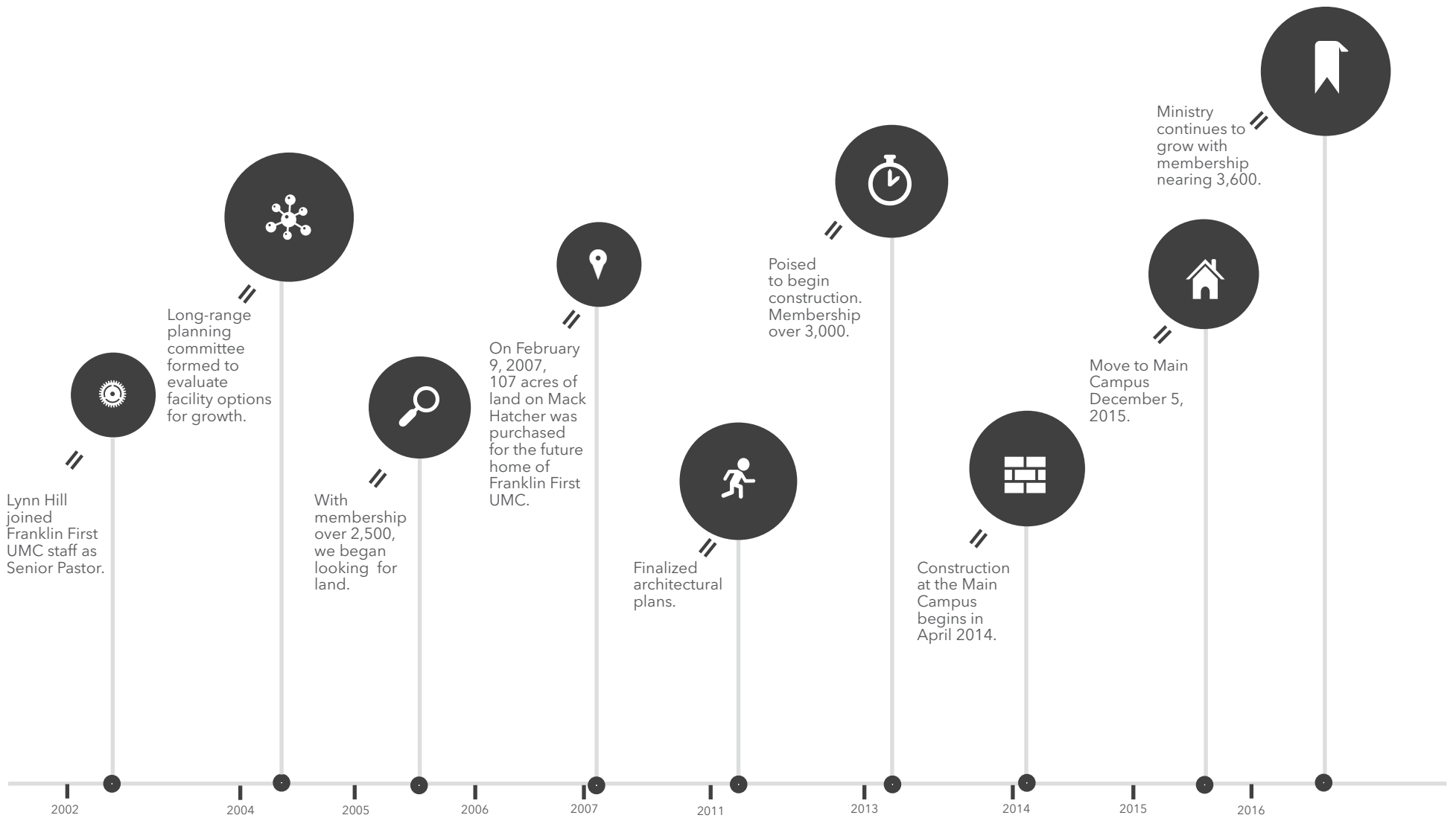
“Beyond Us” is not about giving money to a specific project – though we hope to have a lot of those moments over the next few years. “Beyond Us” is about each of us examining our hearts and determining to live in such a way that generosity defines us and shapes our choices.

IF WE ALL HAVE A
LITTLE FAITH, OUR
BIG GOD CAN DO
THINGS BEYOND OUR
EXPECTATIONS.

OUR HISTORY

A quick snapshot of our big moments in history.





A LOOK AT GROWTH

BEYOND ME: COMMUNITY

For 200 years, Franklin First UMC has shared God's power to change lives. We gather on weekends to worship and we invite our friends and community to join us.

First Time Guests
835

In the past 10 months we have had 127 people join the church. Celebrated with 3255 at Easter services. 33 baptisms and our weekly attendance is up 13.5% with an average weekend welcoming more than 1,200 to worship.

BEYOND TODAY: TOMORROW

Families attending Franklin First UMC are definitely bringing their kids along. First Kids and 415 Youth are proving to grow beyond our expectations.

New Families
125+

Each weekend expect 165 or more in our youth ministry. 67 youth completed confirmation. Over 315 children experience the love of Christ through First Kids. More than 155 volunteers each weekend. 30+ unique programs and classes offered.

BEYOND GIVING: GENEROSITY

God's design for us is growth in every area of our lives. This is what it means to be a disciple. We follow Jesus, learning to love as he loved and live as he lived.

Involved in a Group
1,000+

100+ groups gather regularly for Bible study, congregational care and building relationships. More than 350 engaged in adult Sunday school classes. 20+ new classes and groups added in the past 9 months. 160+ leaders and teachers to make it all happen.

BEYOND SUNDAY: 7 DAYS A WEEK

Our "normal" behavior is to serve others and give our time and talent to extend God's love to the community and around the world.

Partnerships
32

200+ consistently participating in outreach and mission programs. 36 adults serving children in a new school partnership. 528 guests served through Room in the Inn. 240 responded to help with flooding in Louisiana and Mississippi.

BEYOND NUMBERS

We have God-sized dreams for our community. And the only way they can be accomplished is with His help and your generosity. Our church is about serving and investing in those who will follow us as we follow Jesus... our children and grandchildren, orphans and foster kids, students, church planters, teachers, artists, and business professionals who will shape the future of our communities. It starts with making disciples.

Beyond Giving

As a church, we're intentionally moving toward living a way of life defined by love and generosity. This isn't about giving money to a specific one-time project, even though from time to time we will ask you to do those things. "Beyond Us" is about each of us examining our hearts and determining to live in such a way that generosity defines us. It changes how we think and shapes our choices.

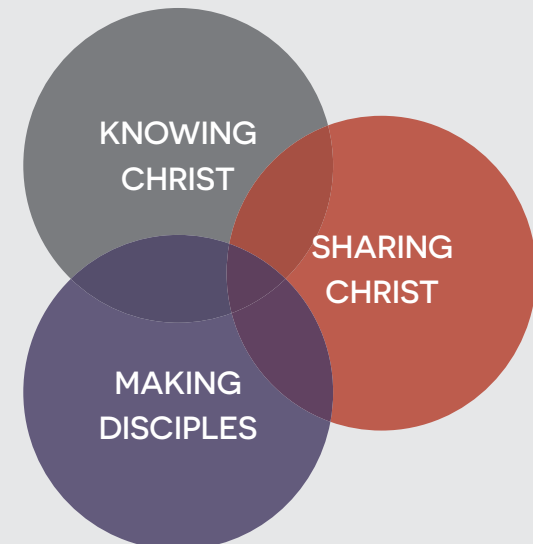
What if for the next three years, we all come together and do our part? What if we all think past just giving and we focus on generosity? How would my life look different if generosity drove my decisions? What impact would it have on things that I said "yes" to outside the walls of the church? How would it shape my choices and inspire my dreams?

Being generous is easy when it's a one-time thing. A quick drop in the plate and you're "off the hook" until next time. What we're asking is something a little different. Your challenge through the "Beyond Us" program is for generosity to become a way of life. Something you decide in advance to do and then keep the momentum going. You've probably heard it said don't look for the fads to get healthy. Being healthy requires a lifestyle change. Generosity works the same way. Giving daily of yourself, your time, your talent, and your resources will develop in you the kind of generous spirit that enables all of us to change lives.

Your Turn

Each of us can take that next step God is asking us to take in terms of generosity. When we take that step at the same time, we can fuel the work of the church. Life change, hope, healing, discipleship,

teaching kids, training students, reaching out to our community and impacting the world, that's why we do what we do. Our mission to know Christ, share Christ and make disciples continues drive our decisions and fuel our motivations. Join us and see what God is able to do that is beyond our wildest imaginations.



THE GIVING LADDER

Starting with your present giving, ask God how you can take the next step to deepen your stewardship. The "Beyond Us" campaign at Franklin First UMC depends on each of you going beyond what you've given in the past.

POTENTIAL

Not yet giving - You can take your first step and begin.

Going from nothing to something is a huge step, but it is transformational.

EMERGING

Occasionally giving - You can take the next step to give intentionally and proportionally.

You're not opposed to giving to church, but your giving is irregular and not intentional. Why not prayerfully choose a percentage, start giving regularly to God and see what He does?

INTENTIONAL

Giving regularly, but less than 10% - you can step up to honor God with your first 10%.

You give but haven't begun to tithe. You're now ready to take that next step. This may require some lifestyle changes, but obedience is always worth it.

TITHING

Giving 10% faithfully - You can go the next step and give extravagantly for the kingdom.

You've developed the discipline of tithing and have seen God's provision again and again. You are ready for a next step. You want to give beyond duty, out of generosity.

EXTRAVAGANT

Giving above the tithe. You can ask God to guide you into a new place of joyous generosity.

This is for those already generously giving beyond the tithe. You've experienced the fulfillment of God's promises and provisions. You're ready to take your next step into obedient generosity. But it is still a challenge and will require faith.

Q&A

WHAT IS *BEYOND US* AND WHAT IS IT FUNDING?

Beyond Us is a capital generosity initiative to raise funds to pay down and hopefully eliminate the mortgage on our property. By eliminating a portion of the mortgage, **we can free up anywhere between \$750,000 to \$1,000,000 in annual cash flow** which can be reallocated to the ministries of Franklin First UMC.

HOW LONG IS MY COMMITMENT?

We are asking that everyone make a three-year commitment, which is 36 months. The fulfillment period for your commitment will begin with our *First Big Give* on Sunday, November 13, 2016 and will culminate in November of 2019.

IS THERE AN ALTERNATIVE TO GIVING CASH?

Be creative as you explore ways you and your family can give to *Beyond Us*. Many people own assets that have appreciated over the years, typically securities, whether it be property, stocks or other investments.

Also consider Franklin First UMC in your estate planning. Many people modify their will and estate planning to include the church in their plans. While this will not impact the project immediately, it is an excellent and bold statement of faith and commitment to the long-term journey of Franklin First UMC.

WHAT IF I AM STRUGGLING FINANCIALLY?

Beyond Us is all about us learning to trust God more deeply and putting Him first in all we do. We believe that asking God how he would have you contribute to *Beyond Us* will challenge you to deeper faith.

The important thing is not how much we give, but the heart with which we give. We want everyone to share in the joy of contributing to God's work and seeing how God builds our life of faith in the process.

WHAT'S NEXT

There are strategic moments in each of our lives when God calls us deeper, asking us to take the next step in our journey. These moments are the difference between living and leaving a legacy. As we go deeper in our relationship with God, we learn what it means to value Him above all else. God is the Giver of Life. He is our Provision. As we learn to give, we learn to risk. As we risk, we trust. As we trust Him, we know Him more. It's in these moments that we hear God's voice loud and clear.

PRAY

You might feel ready to give right here and now. That's great! But most of us will need time over the coming weeks to think and process through where we are and what God wants us to do next. Spend time in prayer each day this month.

GIVE GENEROUSLY

There is no formula, no quick accounting, no percentage target for your commitment. This is a very personal journey for everyone involved. One person might make a million dollar gift without changing their lifestyle, while another gives \$10 a week and has to radically adjust their spending.

TURN IN YOUR COMMITMENT CARD

Whether you intend to give online (<http://franklinfumc.org/give>) or each week in the offering plate, go ahead and fill out your participation card and turn it in with your offering or drop it by the office during the week. This isn't something set in stone, but helps us plan and be strategic about what we are able to achieve together for God's purposes.

TELL YOUR STORY

Tell others about why you believe in this vision. Let your friends know why this is so important to you that you're making changes in your lifestyle to give. Your story will inspire others, but only if you tell it!

**COMMITMENT CARDS WILL BE RECEIVED AS A PART OF OUR
FIRST BIG GIVE ON SUNDAY, NOVEMBER 13, 2016.**

WAYS TO GIVE

A NEW MOTIVATION

As a church, we're intentionally moving toward living a way of life defined by love and generosity.

What if for the next three years, we all come together and do our part? What if we all think past just giving and we focus on generosity. How would my life look different if generosity drove my decisions? What impact would it have on things that I said "yes" to outside the walls of the church? How would it shape my choices and inspire my dreams?

There are many ways you can contribute financially to the Beyond Us Capital Campaign.

CASH

Giving cash is the easiest way to make an immediate impact on the campaign as it allows the church to directly meet its financial obligations. Cash donations are typically received in the offering basket on Sundays, via online giving at our web site <http://franklinfumc.org/give> or by mailing a check to our church office.

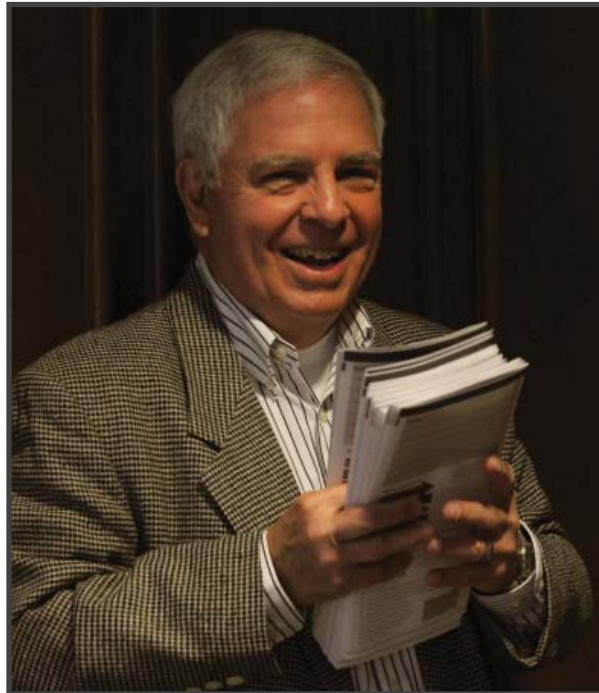
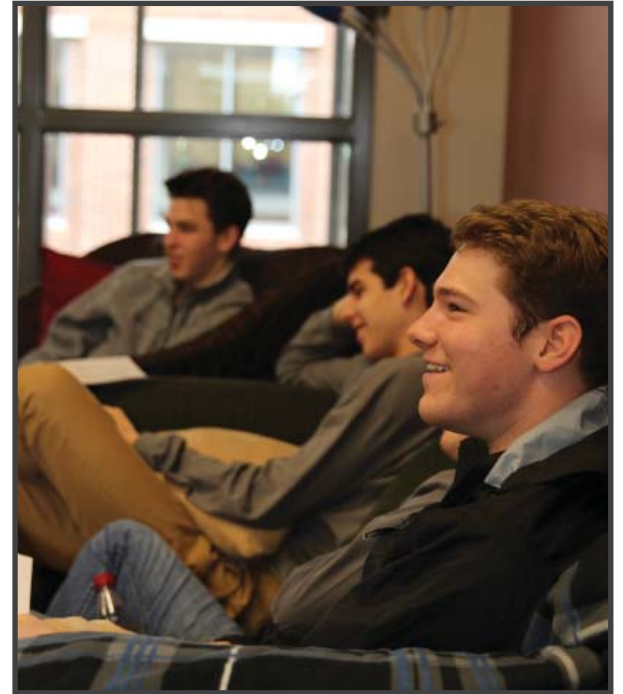
STOCKS OR BONDS

Stocks, bonds or other similar liquid assets are readily marketable and can be easily converted to cash and may offer a tax advantage to the giver.

PROPERTY OR OTHER NON-LIQUID ASSETS*

Real property, such as land or buildings, may be sold and the proceeds used for the campaign.

* Donation of property or other non-liquid assets must be pre-approved by the Board of Trustees.



BEYOND US

3-YEAR GIVING CALCULATION

Weekly	Monthly (36 Months)	3-Year Total (156 Weeks)
\$10.00	\$43.33	\$1,560.00
\$15.00	\$65.00	\$2,340.00
\$25.00	\$108.33	\$3,900.00
\$35.00	\$151.67	\$5,460.00
\$50.00	\$216.67	\$7,800.00
\$75.00	\$325.00	\$11,700.00
\$90.00	\$390.00	\$14,040.00
\$100.00	\$433.33	\$15,600.00
\$125.00	\$541.67	\$19,500.00
\$150.00	\$650.00	\$23,400.00
\$175.00	\$758.33	\$27,300.00
\$200.00	\$866.67	\$31,200.00
\$225.00	\$975.00	\$35,100.00
\$250.00	\$1,083.33	\$39,000.00
\$300.00	\$1,300.00	\$46,800.00
\$350.00	\$1,516.67	\$54,600.00
\$400.00	\$1,733.33	\$62,400.00
\$450.00	\$1,950.00	\$70,200.00
\$500.00	\$2,166.67	\$78,000.00
\$750.00	\$3,250.00	\$117,000.00
\$1,000.00	\$4,333.33	\$156,000.00

This giving schedule is for quick calculation of monthly, weekly and yearly giving. No one should feel constrained by it. Return the attached Participation Card by November 13, 2016 to the Franklin First UMC staff office or place it in the offering plate.

BEYOND US

PARTICIPATION CARD

Knowing that God can do more than all we ask or imagine,
in faith I/we intend to give to the Beyond Us Campaign
over and above our regular giving for the next three years.

Please Print Clearly

Name _____

Address _____

City/State/Zip _____

Phone _____

E-mail _____

MY TOTAL THREE-YEAR COMMITMENT IS:

\$ _____

I would like to give:

\$ _____ Weekly for 156 Weeks (3 years)

\$ _____ Monthly for 36 Months (3 years)

\$ _____ Annually

\$ _____ As a One-time Gift

This is a statement of my intention to give. I understand I can revise it at any time by contacting the church financial office.



BEYOND US

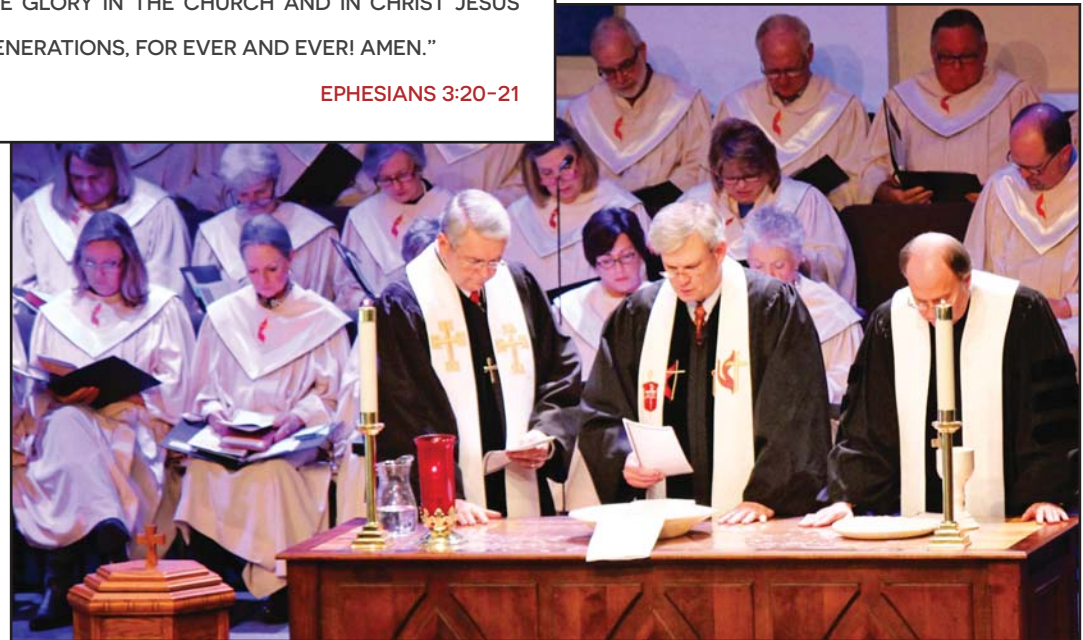
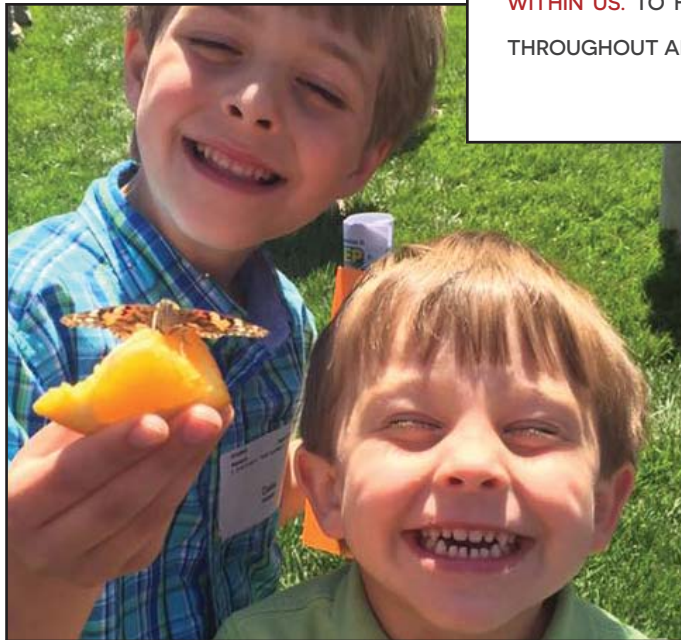
OUR JOURNEY OF GENEROSITY

A FIVE-WEEK JOURNEY OF THANKSGIVING & DEVOTION



“NOW TO HIM WHO IS ABLE TO DO IMMEASURABLY MORE THAN ALL WE ASK OR IMAGINE, ACCORDING TO HIS POWER THAT IS AT WORK WITHIN US, TO HIM BE GLORY IN THE CHURCH AND IN CHRIST JESUS THROUGHOUT ALL GENERATIONS, FOR EVER AND EVER! AMEN.”

EPHESIANS 3:20-21



THANKSGIVING & DEVOTION

BEYOND KNOWLEDGE

In the next several weeks, we will embark on a journey to explore all that is beyond us, but not beyond God. What if we trust in God to lead us beyond where we currently are, toward a place that is beyond our imagination?

Welcome, Fellow Pilgrims! We begin a month-long journey that will help us as followers of Christ find moments of inner solitude. We will learn to listen with open hearts to movements of the Holy Spirit. We will use prayer forms that have been practiced by Christians for centuries that will teach us to listen and discern God's will for us as we yearn to grow ever closer to our Creator.

Beginning this week and in the weeks to come, we will be asked to prayerfully experience Five Pilgrimage Points which will progressively ask us to listen, open and grow more deeply in our love for the One who is.

Franklin First UMC is a community of faith remarkable in so many distinct ways. Our age—at 217 years—makes us one of the oldest Methodist churches in America. Few churches are so blessed by God. Add to this the reality that we have now moved beyond the limitations of our landlocked downtown location that were hindering our potential growth—to this beautiful 107-acre campus with unlimited expansion potential—we can see how the Lord is inviting this historically rich congregation into a future with unlimited capacity to impact this lost and hurting world with the Gospel of Jesus Christ. It is both joyous and humbling at the same time.

Each of us who today claim Franklin First UMC as our church home has a vital role to play in what the future holds for our congregation. Before we get ahead of ourselves and start considering the future, we have an exciting journey of pilgrimage we want you to take. It presents an opportunity to be grounded in the legacy we have inherited from those faithful individuals who were just like us, but have now graduated to life eternal, leaving to us this that they had advanced in their time in this place. This five-stage exercise will take little more than an hour a week to journey back in time to what historic Franklin was like in years past and discover for yourselves what a central role this church has played as a spiritual leader in this great city.

STEPS TO DISCERNMENT

"IF ANY OF YOU IS LACKING IN WISDOM, ASK GOD, WHO GIVES TO ALL GENEROUSLY AND UNGRUDGINGLY, AND IT WILL BE GIVEN YOU." **JAMES 1:5**

An important step for understanding and experiencing God is clearly knowing when God is speaking. Here are some steps for understanding God's plans, purposes and ways.

1. TALK TO A PASTOR OR SPIRITUAL DIRECTOR

God often speaks through others with wisdom.

2. BE ALONE IN SOLITUDE TO LISTEN

Invite God into your decision-making process.

3. TELL GOD WHAT YOU DESIRE, WHAT YOU FEAR, WHAT YOU WANT FOR YOUR CHURCH

Be honest. God can handle your will but be prepared to know God's will and do it.

4. KNOW GOD HAS A PLAN FOR YOU

Remind yourself that God desires a relationship with you and will reveal your purpose and life's direction if you ask and wait.

5. PRAY

Ask "What do you want me to do, God?" Pray for the courage to know it and follow it.

6. COMMIT TO THE PRAYER

See what the prayer brings to you and the church.

WHERE OR HOW HAS GOD SHOWN UP FOR ME THIS WEEK?

HERE'S HOW I WILL RESPOND:

WEEK 1: BEYOND ME: COMMUNITY

GENESIS 2:4-15 "THIS IS THE ACCOUNT OF THE HEAVENS AND THE EARTH WHEN THEY WERE CREATED, WHEN THE LORD GOD MADE THE EARTH AND THE HEAVENS. NOW NO SHRUB HAD YET APPEARED ON THE EARTH AND NO PLANT HAD YET SPRUNG UP, FOR THE LORD GOD HAD NOT SENT RAIN ON THE EARTH AND THERE WAS NO ONE TO WORK THE GROUND, BUT STREAMS CAME UP FROM THE EARTH AND WATERED THE WHOLE SURFACE OF THE GROUND. THEN THE LORD GOD FORMED A MAN FROM THE DUST OF THE GROUND AND BREATHED INTO HIS NOSTRILS THE BREATH OF LIFE, AND THE MAN BECAME A LIVING BEING. NOW THE LORD GOD HAD PLANTED A GARDEN IN THE EAST, IN EDEN; AND THERE HE PUT THE MAN HE HAD FORMED. . . . **THE LORD GOD TOOK THE MAN AND PUT HIM IN THE GARDEN OF EDEN TO WORK IT AND TAKE CARE OF IT.**"

Our first God-given responsibility is stewardship. Stewardship is our privilege of partnering with God in His work on earth.

Do you see yourself as God's trusted partner in the management of His resources?

How do you exercise the freedoms God gives you in your partnership with Him?

How does it make you feel to know that God trusts you in His work?

WEEK 1 INTRODUCTION

“BE STILL AND KNOW THAT I AM GOD.”
(PSALM 46:10)

Prayer can be challenging. It isn't an easy decision to stop our busy lives and set aside time to deepen our relationship with God through prayer. Yet, we know that with God as our center, we can do nothing else but turn to our "Abba."

“WHEN YOU PRAY, GO TO YOUR INNER ROOM AND CLOSE THE DOOR. PRAY TO YOUR FATHER IN SECRET/SILENCE AND YOUR FATHER WHO HEARS YOU IN SECRET/SILENCE WILL REWARD YOU.” (MATTHEW 6:6)

Learning to listen is instrumental to hearing God's vision for us as followers of His Word. If we are talking to God all the time, how can we hear what God has in store for us? Beginning this week and in the weeks to come, we will be asked to prayerfully experience Five Pilgrimage Points which will progressively ask us to listen, open and grow more deeply in our love for the One who is.

WEEK 1 PRAYER

*“Oh Spirit within me, around me, **Beyond Me**, I commit to saying, “Here I am, Lord! Show me Your Ways. Help me find moments every day this week of solitude to practice letting go of my busy life that is so full of distractions. Distractions that keep me from sitting with You and opening my heart to listen to You. For I know that my relationship with You and my church's transformation can only happen when I intentionally take time to make You my center.” I will humbly hold this prayer in the quiet times that I spend with You, my Creator, my All. In Your Name, I pray. Amen.*

WEEK 1 PRACTICE

This week, notice times throughout your day when solitude naturally occurs; early morning walks, time in your car, moments when your office door is closed, at home after everyone else has gone to sleep. Don't ignore these moments and don't try to fill them with stuff, mental "To Do" lists, phone calls. Appreciate these periods of solitude and savor them! Tell God that you are going to spend this time in quiet prayer, resting and listening. Tune into what may keep you from enjoying these moments. What feelings, situations, or images surface that keep you from just being with God? What distractions change your focus from gazing at your Creator to worrying about tomorrow, solving a work conflict, or anticipating the next scheduled event? Name that distraction, then let it go! This is your time with your God! When your time together is finished, the walk is done, you've arrived at your destination and life pushes you to the next thing, thank God for your time together and recommit to spending time listening again tomorrow. Your pilgrimage has begun and God is already there waiting for you!

WEEK 1 PILGRIMAGE POINT

HISTORIC SANCTUARY

THE SITE. The land for the historic sanctuary was purchased in 1869 and the structure itself completed in the spring of 1872. The building possesses an enchanting simplicity. As you are enjoying the deep solitude of the reverent space, you can sense the muffled sounds of the world outside. Walk slowly and prayerfully throughout the sanctuary. Take time to notice the details in the beautiful space.



THE PEWS. Examine the handcrafted pews that were built by a local carpenter whose shop was next to the railroad depot. Each pew is its own geometric study with a unique arc, length and angles. The wood, arriving on wagons as enormous oak logs, was hewn and crafted into these exquisite pews using the most primitive of tools almost 150 years ago. How easy it would have been to have a single aisle and make fifty identical pews like every other church.

THE WINDOWS. Look at the gothic arched windows with their handmade colored glass (a costly item in that day) with its uneven coloring and characteristic waves and imperfections. The interesting play of light and the traffic moving outside can be seen through the lighter colored panes. Notice the circular rosette shape at the top of each window, a design that is repeated in other places around the building.



THE ALTAR RAIL. Take time to kneel at the communion rail, original to the building, and imagine our spiritual forebearers who poured out their petitions before the Lord, received Holy Communion, were confirmed as members, or knelt to accept Jesus Christ as Savior. This may truly be one

of the most anointed places in the city. Please lift your own petitions to the Lord, and also pray that the generosity of our entire church would be inspired to rapidly pay down our debt so we can begin plans for the next phase of our new building which will be the formal sanctuary.



THE PULPIT. Take a careful up-close look at the pulpit, which also is original. Observe its exquisite carving and excellent proportions. Imagine the powerful sermons calling lost sinners to repentance and promising freedom in Christ Jesus to all who would trust in Him alone for their salvation.

As you meditate on this exquisite building, consider its massiveness and the thickness of the brick walls. The entire structure was so much more beautiful and solid than any other building of its type at that time. It is especially worthy of mention that this was built in the aftermath of the war when reconstruction everywhere required funds for our member's own lives and homes. They certainly could have built a smaller, less durable building that would have accomplished the purpose, but they instead cast a vision for a worshipful church home for the ages that reflected the centrality and priority that Christ had on their hearts and lives. It has been a gift from them to a people who would not even be born for over 150 years in the future!

CONSIDER THAT EACH GENERATION HAS CONTRIBUTED TO THE PRESERVATION AND ENHANCEMENT OF THIS MAJESTIC PLACE OF DIVINE WORSHIP.

THE BUILDING. The rest of the building is charming in its own way. The addition of the annex in 1916, construction of the basement "fellowship hall" in 1949, addition of the chancel in 1965, and beautiful organ and annex seating in 1981.



WHERE OR HOW HAS GOD SHOWN UP FOR ME THIS WEEK?

HERE'S HOW I WILL RESPOND:

WEEK 2: BEYOND TODAY: TOMORROW

MATTHEW 25:14-23 "AGAIN, IT WILL BE LIKE A MAN GOING ON A JOURNEY, WHO CALLED HIS SERVANTS AND ENTRUSTED HIS WEALTH TO THEM. TO ONE HE GAVE FIVE BAGS OF GOLD, TO ANOTHER TWO BAGS, AND TO ANOTHER ONE BAG, **EACH ACCORDING TO HIS ABILITY. THEN HE WENT ON HIS JOURNEY** . . . HIS MASTER REPLIED, 'WELL DONE, GOOD AND FAITHFUL SERVANT! YOU HAVE BEEN FAITHFUL WITH A FEW THINGS: I WILL PUT YOU IN CHARGE OF MANY THINGS. COME AND SHARE YOUR MASTER'S HAPPINESS!'

God invites us to work with him in the "family business" by managing His resources to fulfill His work on earth.

As a boy of twelve Jesus said, "I must be about my Father's business." How might this apply to us?

Do you view your material resources as your opportunity to participate in God's business in the world?

How does it make you feel to know that God trusts you and is counting on you to be an active partner in accomplishing His will and work on earth?

WEEK 2 INTRODUCTION

“BE STILL AND KNOW THAT I AM GOD.”
(PSALM 46)

As we continue to discover, even anticipate, moments of solitude in our daily lives, we begin to notice how God is present around us and in us. We want to know this God. We want to see more clearly our God who is immanent in every cell of His creations from a blade of grass to the stewards of His creations – US!

Our actions and intentions can either move us closer or further away in our relationship with God. We know that God is already waiting for us. We just need to figure out how to get out of our own way so that we can live lives focused on praising and bringing God’s plan to fruition.

“Our Father, who art in Heaven. Hallowed be thy name! Thy kingdom come, Thy will be done on earth as it is in Heaven!” This week, through a clear refocusing of our purpose as God’s servants and with a certain indifference or detachment to our current circumstances, we will examine periods of our past and present in the way of St. Ignatius’s Spiritual Exercises so that we can discern where God is at work in our futures.

WEEK 2 PRAYER

*Dear God, I desire to be in relationship with You **Beyond Today!** I yearn to know Your ways, to be held in Your gaze every moment of every day. Make me Your instrument of peace and reconciliation in a world that is separated from You. Help me to be Your face to my family, my church, my world. And as I search my soul to learn what You would have me learn, help me to know and follow the path that brings me closer to You not farther away. As Your humble servant, I pray. Amen.*

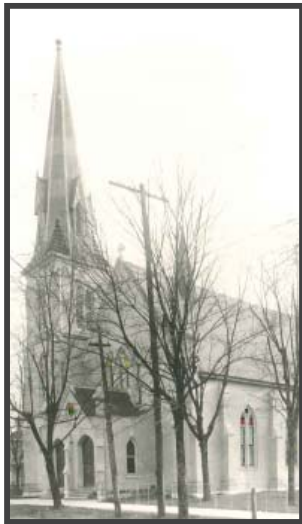
WEEK 2 PRACTICE

Continue to spend time in daily solitude and reflection this week. In your quiet moments, become aware of an event, time or circumstance in your life. Reflect on it. Ask yourself, did you feel God’s fullness or an emptiness? If you felt empty or lost, did you still desire to know God’s plan for yourself? There are ways to know if what you feel or hear is from God or if you are forcing your plan on God. Even in the darkest of times, God is present to us waiting for us to acknowledge and surrender to His power and love. As you reflect on your choices, a pattern may present itself to you – moments of comfort and moments of misery. Feelings and thoughts that draw us deeper into God’s fullness or take us further down a path of distraction and busyness holding God at arm’s length. Practice this discernment process as your days unfold this week. Learn from your decisions that have brought you to this point in your relationship with God. Then look, listen and feel for those moments when God is drawing you closer, challenging you to know Him and to be His face and hands and heart in this world.

WEEK 2 PILGRIMAGE POINT

PRAYER WALK DOWNTOWN

We now invite you to explore on foot some of the forgotten points of interest as they relate to our church's heritage in downtown Franklin. You will make a four-block loop that begins and ends at the historic sanctuary. The stops on the tour encompass sites that were active parts of our church life throughout the span of over 200 years.



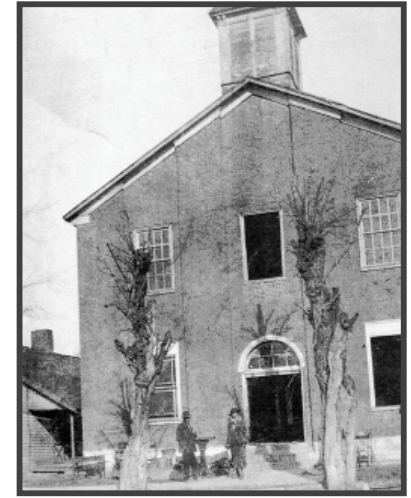
EXTERIOR OF HISTORIC SANCTUARY.

(SW corner of Fifth and Church) Notice the red bricks, how they are actually painted red and are not really red bricks. The original bricks were made down by the Harpeth River out of river mud. The building was originally painted solid white. In the late 1800s it was painted solid red. The mortar was later repointed and the appearance of red bricks became noticeable. Notice the steep roof line and the stone caps on the parapet walls, also with the arch effects and rosette window above double doors of the narthex.

CHURCH PROPERTY ACROSS THE STREET. (Block between Fourth and Fifth) Prior to the move to the Main Campus in December of 2015 we occupied almost the entirety of the block across the street. Beginning in 1906 with our first purchase, each parcel of land and each building acquired or constructed had its own story as the church grew and each generation sacrificed and contributed the funds to add buildings to accommodate the growing numbers.

SECOND CHURCH SITE. (NE corner Second and Church) You can now walk two blocks east and stand at the corner of Second and Church. This is the site of the

second church building. This structure was occupied by federal troops during the Battle of Franklin and used as a hospital after it was over. The building was originally completed around 1830. In 1865 E.M Bounds was appointed pastor here immediately after the close of the war and helped lead the powerful revival that occurred during that time. After the war, and resulting from the revival, it was decided to purchase the triangular lot three blocks up the street. This previous building was sold to the AME congregation that is now Shorter Chapel. In the 1920s they dismantled the church and used the materials to build their present structure at Eleventh and Natchez.

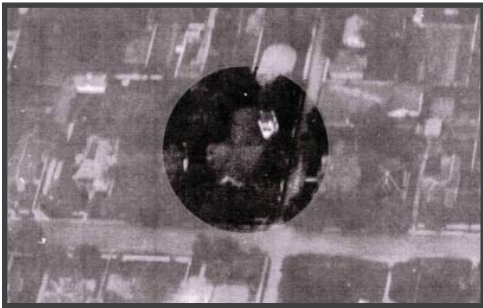


AFRICAN METHODIST CHURCH. Still standing opposite the second church site sits the former black church that was built by the Northern Methodists as a mission church for former slaves. Now the home to the Pull Tight Players, you can easily read the inscription "Wiley Memorial M.E. Church" on the cornerstone. Interestingly in 1869, after our congregation moved and sold the A.M.E. church building, this M.E. (Northern) black church was built.

FIRST CHURCH LOCATION. (First Avenue at the terminal end of Church Street) In this empty field to the right of the silos is where the first building was built. Remarkably, it was a brick structure, unusual since most similar buildings of that era were of log construction. The site, called the "Meeting House Lot" in the original plat of Franklin, was set aside by founder Abram Maury, who was a Methodist. Founding American Methodist Bishop Francis Asbury preached there in 1812. We are one of the few continuing churches who can make that claim. In his journal he records it as "neat little brick house on the Harper [sic] River.

DEPOT AREA. Walk one block to the South to the area where the railroad service yard is located. The freight warehouse is still present. The carpenter's shop that in 1870 crafted the Historic Sanctuary pews was located here. Imagine the massive logs arriving on wagons and being reshaped into our treasured pews. The depot itself was where countless new pastors would arrive to begin their ministry at our church. The Board of Steward's minutes every year or so would record that "brother so and so met the new pastor at the depot and helped him get situated in his new lodging."

HOLINESS TABERNACLE SITE. (SE corner of Fourth and Margin) Proceed two blocks west and stand in front of the "Casa De Mi Padre," the Hispanic congregation that is occupying the former Nazarene church which relocated in the



1980s. This building and the stone parsonage behind it was the site of the mammoth 2,000-seat Holiness Tabernacle which was completed in 1896. It was built a few years after Nashville's Union Gospel Tabernacle (now called the Ryman) was built for the same purpose

of preaching John Wesley's doctrine of sanctification, or the heart perfected in love which frees persons from the bondage to sin. This is the structure that was dismantled in 1929 with the materials being used to build a speakeasy on Moore's Lane. More on that later.

TENNESSEE FEMALE COLLEGE. On the corner opposite the Holiness Tabernacle sat the Methodist school called the Tennessee Female College. In the days before public education, private church-sponsored academies were common. Two structures were built on this site which encompassed the entire southern half of the block facing Margin between Fourth and Fifth. The first one burned and the second one survived until the early 1900s when public schools made the school

unnecessary. Shortly after the Civil War, our pastor, Robert K. Hargrove, became the president of this school and was later elected Bishop and ultimately was named the second chancellor of Vanderbilt University, the new Methodist university founded in Nashville in 1872.



Now, back to Historic Sanctuary. You have completed a historic loop that represents Franklin First's deep roots in Franklin. Imagine that in the years between the Civil War and 1900, Franklin grew to have about 2,000 residents. In 1900, our congregation alone had 500 members. By comparison, the then First Baptist Church (located at Third and Church) had 70 members. Our congregation today has nearly 3,600 members, substantially more than the entire city population of 100 years ago.

UNDERSTANDING OUR PAST IS CRITICAL TO UNDERSTANDING OUR FUTURE AND FOR THE WORK GOD IS DOING, AND INVITING YOU TO BE A PART OF IT THROUGH THE *BEYOND US* CAMPAIGN.

WHERE OR HOW HAS GOD SHOWN UP FOR ME THIS WEEK?

HERE'S HOW I WILL RESPOND:

WEEK 3: BEYOND GIVING: GENEROSITY

JOHN 12:1-8 "SIX DAYS BEFORE THE PASSOVER, JESUS CAME TO BETHANY, WHERE LAZARUS LIVED, WHOM JESUS HAD RAISED FROM THE DEAD. HERE A DINNER WAS GIVEN IN JESUS' HONOR. MARTHA SERVED, WHILE LAZARUS WAS AMONG THOSE RECLINING AT THE TABLE WITH HIM. **THEN MARY TOOK ABOUT A PINT OF PURE NARD, AN EXPENSIVE PERFUME: SHE Poured IT ON JESUS' FEET AND WIPED HIS FEET WITH HER HAIR. AND THE HOUSE WAS FILLED WITH THE FRAGRANCE OF THE PERFUME . . .** LEAVE HER ALONE, JESUS REPLIED. IT WAS INTENDED THAT SHE SHOULD SAVE THIS PERFUME FOR THE DAY OF MY BURIAL. YOU WILL ALWAYS HAVE THE POOR AMONG YOU, BUT YOU WILL NOT ALWAYS HAVE ME."

The value of the gift before God is not determined by its dollar amount. God seeks gifts that accurately reflect our life, labor and love.

Have you considered that your generosity should touch your lifestyle as well as your bank account?

Do you see a correlation between investing your life in a worthy cause and giving generously to it?

Why does God value generosity as a part of the Christian lifestyle?

WEEK 3 INTRODUCTION

Through our practice of last week, we find ourselves noticing how God is at work in our lives and in our relationships. We begin to see how interdependent we are as a people. We see the face of God in our neighbors, co-workers, people we pass on the street, people who need our help. We realize that God is in the faces of the homeless, in the creatures that inhabit our communities and our church property.

How do we respond to God's face in each of these situations? How do WE be the face of God to them? This is our spiritual journey. This week we will take some of our moments of solitude and move. Intentional walking as a prayer form is as old as the exodus of the Jews from slavery to freedom.

People from all over the world and from all faiths make holy pilgrimages to the sacred places in their religions – Jerusalem, Mecca, Allahabad, Gangetic Plains, Rome. Our spiritual walk this week does this on a much smaller scale, but just as powerfully. It's a journey toward God who wants to be in relationship with us and who wants to show us how to live our lives to the fullest. Movement through walking frees our minds and creates space for God to speak to us.

WEEK 3 PRAYER

*Lord, you have opened my heart to the wonders of your ways. In this journey, You have shown Your face to me in the people I encounter and in my relationships. I see you in the sunrise, the scent of the garden after rain, the feel of the earth as I walk. Take the steps that I make as a sign of my desire to walk closer and more deeply with You. I may stumble or trip on this journey, but my focus is on You, Lord. My pace may be slow, but it is intentional. As I walk, I feel myself opening my heart to listen for Your transforming wisdom, so that I may always walk in your light. As my body moves through space, I ask you to create space in my heart for Your love. For I know that in this holy space, there is freedom. Freedom to live Your will. Freedom to live with a generous heart. Freedom to live **Beyond Giving**. Freedom to live as You would have me live. Take this journey and make it Yours. I humbly pray. Amen.*

WEEK 3 PRACTICE

This week, in your times of solitude, walk intentionally, slowly. Focus on slowing your breath, feeling the ground under your feet, noticing the natural rhythm of your walk. This isn't a race or a distance competition. Walk in a circle if you need to, but walk with a listening heart, listening to what God is trying to tell you. Maybe it is as simple as "Slow down;" "Take better care of yourself." Or maybe your walk opens your eyes to the needs of those you pass. Maybe your walk stimulates an appreciation for God's creation or a sense that you need to do more to protect it. Wherever your walk takes you, make it purposeful. You are on a spiritual journey, a pilgrimage to discern what God has planned for you. Open yourself through your walking. God is there waiting.

WEEK 3 PILGRIMAGE POINT

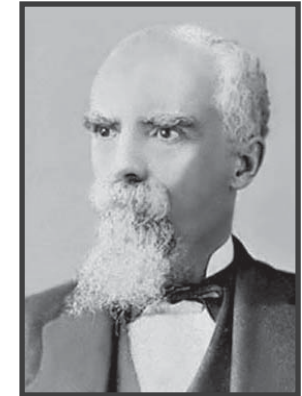
CARNTON CEMETERY

We now consider one of Franklin's darkest and most defining moments in its history. The McGavock Cemetery is a haunting and enchanting place of contemplation. Few people know of the deep tie this hallowed place has to the Methodist church and its beloved pastor E.M. Bounds. You can locate the cemetery by driving the new road into the Eastern Flank Battlefield Park that includes the Carnton Plantation.



E.M. BOUNDS Following the devastating loss of around 6,000 soldiers at the Battle of Franklin on November 30, 1864, the dead were hastily buried in fields on the southern side of Columbia Avenue, down and across from the Carter House. It was a great burden that former Missouri regimental chaplain, now the Franklin Methodist's pastor, E.M. Bounds, carried to see

the brave soldiers were properly buried. He spearheaded the formation of the Carnton Cemetery on the McGavock plantation and personally supervised the relocating of the graves to the new site. He also returned to his native Missouri to raise funds for the Missouri regiment's marker. E. M. Bounds is reported to have carried a small list of his lost Missouri boys in his wallet throughout the remainder of his life.



Take the time to walk through this most beautiful of cemeteries and imagine the gruesome, yet purposeful work of relocating these graves. Imagine our pastor's deep love and respect for these young men, boys really, and his resolve to see that their death was appropriately respected with a proper burial.

FOR THE PAST 200 YEARS FRANKLIN FIRST UNITED METHODIST CHURCH HAS BEEN INTENTIONAL ABOUT RESTORING HOPE TO OUR COMMUNITY.

A GOD-SIZED INVITATION

“NOW TO HIM WHO IS ABLE TO DO IMMEASURABLY MORE THAN ALL WE ASK OR IMAGINE, ACCORDING TO HIS POWER THAT IS AT WORK WITHIN US.” **EPHESIANS 3:20**

The way you live your life is a reflection of your relationship with God. When you feel led to participate in a God-sized invitation, you will quickly realize you cannot do what God is asking on your own. This deepening of belief always requires faith and action. Here you are faced with a decision, trust God and keep moving ahead or choose another path. All of these feelings are perfectly normal, and what you do next is where faith enters the picture.

1. **STAY POSITIVE**

Just being on the journey is pleasing to God. Anytime you are in prayer and actively seeking God is a good thing. Keep moving forward and take note of how your perspective on daily events might be different when it is God-centered.

2. **STAY OPEN**

How are you listening? Continue to make yourself available to God through prayer and study. Observe how God may be working through conversations you have with others or circumstances that pop up in your day.

3. **STAY READY**

What is God asking you to do? Be aware of how God is working in your heart. Do you sense that God is asking you to take any action? Make a note of those thoughts and come back to them later to see if they still hold true. This could be an indication of how God wants you to act. Remember, your life is a reflection of your relationship with God that requires not only faith, but also action. When you sense a clear direction be ready to obey.

WHERE OR HOW HAS GOD SHOWN UP FOR ME THIS WEEK?

HERE'S HOW I WILL RESPOND:

WEEK 4: BEYOND SUNDAY : 24/7

PHILIPPIANS 2:5-11 "IN YOUR RELATIONSHIPS WITH ONE ANOTHER, HAVE THE SAME MINDSET AS CHRIST JESUS: WHO, BEING IN VERY NATURE GOD, DID NOT CONSIDER EQUALITY WITH GOD SOMETHING TO BE USED TO HIS OWN ADVANTAGE; RATHER, HE MADE HIMSELF NOTHING BY TAKING THE VERY NATURE OF A SERVANT, BEING MADE IN HUMAN LIKENESS. AND BEING FOUND IN APPEARANCE AS A MAN, HE HUMBLISHED HIMSELF BY BECOMING OBEIDENT TO DEATH—EVEN DEATH ON A CROSS! THEREFORE GOD EXALTED HIM TO THE HIGHEST PLACE AND GAVE HIM THE NAME THAT IS ABOVE EVERY NAME, THAT AT THE NAME OF JESUS EVERY KNEE SHOULD BOW, IN HEAVEN AND ON EARTH AND UNDER THE EARTH, AND EVERY TONGUE ACKNOWLEDGE THAT JESUS CHRIST IS LORD, TO THE GLORY OF GOD THE FATHER."

A generous heart beats seven days a week. Christ calls us to a lifestyle that allows us to invest in greater good and higher values.

We often think of generosity in terms of financial giving, but what are some other ways we can be generous in our words, time, and abilities?

Are you aware of greater causes in which you would like to invest your life by giving?

Have you ever adjusted your lifestyle and priorities in order to give to something you strongly believed in?

Do you view your material resources as your opporuntunity to particiapte in God's business in the world?

WEEK 4 INTRODUCTION

In our fourth week, we have established times of quiet contemplation where we are open to listening and reflecting on God's movement in our lives. We have tried different prayer forms to help us open and be present to God. We are committed to transforming our lives with God as our Center.

While maybe trying new ways to deepen our faith, we are still grounded in His Living Word. We know that we can learn much from the stories and teachings of Jesus. We also know that we can experience and deepen our relationship with God through the sacred reading of scripture.

This prayer form is called Lectio Divina and was formalized in St. Benedict's Rule centuries ago. Lectio Divina involves a special way of listening, reflecting and speaking through scripture to discern what God has planned for us. This prayer will encourage us to be open to the movements of the Spirit.

WEEK 4 PRAYER

*Jesus, teach me your ways. You are the Living Word of God... I hear your words in church. I may start and end my days reading your words. I want to dig deeper in my understanding of Your plan for me **Beyond Sunday**. Help me open to your transforming love as I practice sacred reading of scripture. You named me even before I was born. You ground me and sustain me through scripture and prayer. My time with You moves me to do Your will. Keep me on this path of silence, listening, opening and changing. All things are possible through You. I humbly give my life to You every time I hear You call. Amen.*

WEEK 4 PRACTICE

Step 1: Read Matthew 25:14-23 slowly several times. Don't focus on the literal meaning of the words and story. Let the words sink into your body as you reread them. Let the words fill your inner sacred space. After awhile, the process of reading becomes listening. Listen for a word or phrase that speaks to you. God is reaching to you. Listen.

Step 2: Focus on your word or phrase. Repeat your word. Let go of the scripture passage. Let the word ruminate in you. God will take it from there. Allow yourself to listen and follow where God will lead you.

Step 3. At some point, you may be moved to speak to God. Wait for the words to come. Choose a few to express yourself. In silence, speak your thought or question to God. Then practice listening for a response. This is the ebb and flow of a conversation between parent and child, between close friends.

Step 4. In every conversation, there comes a time when everything has been said and words are not necessary. Now it is time to just be with God. Open yourself to resting in God's love, to being held in your Creator's loving gaze. God sees you as your true self made in God's image. Express your gratitude as your time together comes to an end.

WEEK 4 PILGRIMAGE POINT

MAIN CAMPUS

The inspiring new structure that is now our Main Campus was designed to have many architectural features reminiscent of our beloved Historic Sanctuary downtown. Many of these are obvious at a glance while some of the other historical treasures are not so visible. We invite you to take some quiet time to acquaint yourself with your amazing new church home. As you do so, remember some of the characteristics of the downtown church. We have attempted in many ways to honor the legacy of those whose sacrifices and loving made it possible for us to so courageously take the risk of trusting God in this bold venture.



OLD BECOMES NEW

E.M. Bounds and the Holiness Tabernacle are central figures in our five-week pilgrimage journey. In 1866, Rev. Edward McKendree Bounds (E.M. Bounds), the former Missouri regimental chaplain during the Battle of Franklin and our pastor at the close of the war,

gathered a group of members on Tuesdays to pray for reconciliation and revival. For over a year they prayed until the Lord answered with a mighty outpouring of his Holy Spirit. This tremendous revival is what ignited a fire that has yet to be fully spent. It's important to tell a bit more about the Holiness Tabernacle since many of its elements are incorporated into our new church. The tabernacle, built as a sister structure to the now-named Ryman Auditorium, was built in response to a second major revival which began here in 1894. This revival was centered in the Methodist Church but spread across the city. The leaders in a number of churches joined to construct the 2,000-seat auditorium at Fourth and Margin Streets. Remember that Franklin only had about 2,000 residents at this time. Some thirty years later after the

revival had died down, the tabernacle was used mostly for political rallies and other meetings. By 1929, the building was in poor repair and ultimately was condemned by the city. Ironically, the materials were sold to a Nashville gambler who built a speakeasy at Moore's Lane and Franklin Road. During WWII this building became a residence that has stayed in the Owen-Maddox families ever since. When the property was sold for development in 2015 the Maddox's offered the wood to the church to be salvaged and again used for sacred purposes. This reclaimed wood was creatively used in the construction of our new facility in many ways. Spend some time exploring the building and discover some unnoticed features of our marvelous new church home.



E.M. BOUNDS PRAYER ROOM. This room is prominently located off the central narthex and signals that prayer is vitally important to our lives as believers. The room is named for Edward McKendree Bounds (E.M. Bounds) who, in the decades following his pastorate here, became a distinguished author of books on prayer. Few (if any) authors have such strong legacy of continual popularity. In the one hundred years since his death his numerous books on prayer have been republished in countless editions by a number of prominent publishers. The prayer room has the rough hewn wood flooring that was salvaged from the tabernacle. A replica section of the Historic Sanctuary's communion rail is at the center of the room. Two pews that once were used in the downtown church face each other and create an intimate seating arrangement. Additional marble top tables and Victorian chairs were once in use in the church downtown as well.



WESLEY HALL. Named for Methodism's founder John Wesley, this large room is designed for worship as well as social gatherings. The wood-trimmed gothic arches lining the hall and imbedded in the windows are similar to the arched windows downtown. The dual aisles remind us of that beloved and familiar place that served our family for nearly 150 years.

CHANCEL STAGE. Proceed on up to the platform and see the five-foot circle of wood imbedded in the center of the stage. In a similar way the new Grand Ole Opry inset a circular portion of the Ryman stage in their new location, we used the tabernacle flooring in the same manner. The beautifully finished flooring wood is also incorporated on the top of the altar, the pulpit, and the lectern.



ASBURY HALL. Named for the pioneer Methodist Bishop, Francis Asbury, this room is the most architecturally prominent feature of the new building when viewed from the front. Its enormous window with three interconnected arches represents the Trinity of Father,

Son, and Holy Spirit. Its soaring barrel ceiling makes a statement of architectural detail and stunning beauty. The circular window with carved wood rosette design is inspired by the rosette symbols imbedded in our Historic Sanctuary.



FRIENDSHIP COMMONS NARTHEX. This impressive hall with its dual staircases creates an inviting first impression to persons entering the church. Notice the repeated use of the gothic arches including the three at the second level, also represent the Trinity. The wood carved rosette is even more beautiful when viewed from this room. Please take the time to read all the historical displays and examine the photos. They tell the story of the powerful spiritual movement that is Methodism as well as distinct details of Franklin First's 217 year history.

The gracious symmetry of the building with its central courtyard and spacious second level deck creates an inviting environment to worship God and form friendships. By intention, the exterior of the building bears remarkable resemblance to the architectural character of the Historic Sanctuary. You can identify many of those design features as you explore the inside and outside of the majestic structure.

WHERE OR HOW HAS GOD SHOWN UP FOR ME THIS WEEK?

HERE'S HOW I WILL RESPOND:

WEEK 5: BEYOND US : A GOD THING

EPHESIANS 3:20-21 "NOW TO HIM WHO IS ABLE TO DO IMMEASURABLY MORE THAN ALL WE ASK OR IMAGINE, ACCORDING TO HIS POWER THAT IS AT WORK WITHIN US. TO HIM BE GLORY IN THE CHURCH AND IN CHRIST JESUS THROUGHOUT ALL GENERATIONS, FOR EVER AND EVER! AMEN."

The relationship God wants to have with you is real and personal. Just like the stories of people in the Bible who were asked by God to go beyond what they could do alone, God's invitation for you to work with Him always leads you to a crisis of belief that requires faith and action.

God always takes the initiative to involve His people in His work. Where do you see God's thumb print and are you willing to join Him there?

You come to know God by experience as you obey Him and He accomplishes His work through you. What God moments have you experienced lately? How have you heard God speak to you during these past few weeks?

What adjustments must you make in your life to join God in what He is doing?

WEEK 5 INTRODUCTION

In our final week, we can look back at our journey to deepen our relationship with God. We can look at the ways that we have grown in our spirituality. God has spoken to us, and we have responded.

So where do we go from here? We know that this is *Beyond Us*. Our growth comes from the grace of God through the Holy Spirit working within us. So, we continue to stay grounded in prayer as God's people. We look and move through our world with renewed spirits and open hearts. We know that God is with us all the time, gently guiding us through prayer practices that attune us to movements of the Spirit.

How can we affect the change that God calls us to make? What are our talents and our gifts?

How do we faithfully give of ourselves and give of our resources?

As people named by God, what does our transformation look like, and how is it reflected in the service of our hands and hearts? "Thy will be done on earth as it is in heaven."

WEEK 5 PRAYER

*O Holy Spirit, continue to heal, challenge, and permeate my being. I will continue to open and listen to You. I am moved to be Your face and hands to the world. Here I am, Lord. Use me to do Your will. I commit to spending time with You in solitude, prayer and service. I will do my part to hear Your words and feel Your restorative love. I will move faithfully among the world touching Your creation in spirit-led ways that are **Beyond Us**. You are my Center, and all things are possible through You. I am Your humble servant. Amen.*

WEEK 5 PRACTICE

Practice, practice, practice! Remain in prayer! That is how we are in an ever-deepening relationship with God. When we are lost, we return again and again to the solitude where we can rest in God's love. In our final week of practice, we have tasted the Fruits of the Spirit. As a community, as a church, we will continue to pray for an increasing awareness of the movements of the Spirit.

God has shown each of us His face, and God shows us as a church how to be church to others through honest reflection, empowerment of our members, humbly sharing of our gifts and talents, detachment from our material goods, desire for a stable environment and community so that we ALL may grow in faith. All these are gifts from God. All these are challenges and opportunities to share, grow and serve. God is waiting for us. Here we are, Lord! Your humble servants are listening. Show us Your way!

WEEK 5 PILGRIMAGE POINT

THE JOURNEY

After you have had the opportunity to spend these past few weeks in thoughtful contemplation and gratitude for the rich heritage we all share as members of the body of Christ known as Franklin First UMC, there is one more activity where we would like you to engage. In the experiences you have recently completed we are asking you to imagine the faithfulness of our forefathers and foremothers in the church for the more than 200 years we have worshipped here in our beloved community of Franklin.

A STONE OF MEMORIAL. Just as the Israelites stacked stones on the bank of the Jordan River as a memorial when they crossed over into the Promised Land, we are all engaging in a ritual of thanksgiving and remembrance. By the act, we now ask you to imagine the future. Outside the east-facing doors of the main entrance to the Main Campus there are piles of small boulders or smooth rocks. We ask you to select a stone (one for each member of your family) and write a Bible verse on it. The verse can be selected from a list provided or you can choose one yourselves. You only need to write the verse number, for instance John 3:16, using the marker pens provided.

After you have done this, you can take the stones to the tented area in the middle of the large field on the other side of the main drive. Add your stones to those already placed there. This is the location of the future sanctuary which will one day be built to accommodate the future generations of Franklin Methodists who will call Franklin First UMC their church home. We do this as an act of faithfulness, representing our intention to stand unified in our commitment to see that the great work of this church continue its uninterrupted progression.

Just as we have seen additional property purchased and facilities expanded all throughout our history including 1799, 1830, 1872, 1880, 1895, 1906, 1916, 1949, 1958, 1965, 1972, 1975, 1981, 1995, 2007, and most amazingly in 2015, we have seen a heart-inspiring pattern of sacrifice and provision as God has continuously called the members of our church. They have been called each in their day, not only increase the size of the church for their own family's use, but looking to what is ahead in



order to welcome all to experience the inclusive love of this great church. We are the beneficiaries of their extravagant generosity as we have worshipped and been taught in buildings that, for the most part, we didn't finance or build. Imagine with gratitude the 217 years of witness and sacrifice the previous generations have given to this mighty congregation that we now call Franklin First United Methodist Church.

IMAGINE WITH JOY AND AWE WHAT THE FUTURE HOLDS FOR OUR FAMILIES AND CHILDREN AND OUR CHILDREN'S CHILDREN.

CONTACT US

120 Aldersgate Way
Franklin, Tennessee 37069
615.794.2734



email: secretary@franklinfumc.org | www.franklinfumc.org